

APPROCHE AUX INSTRUMENTS

ORLEANS SAINT DENIS DE L'HOTEL

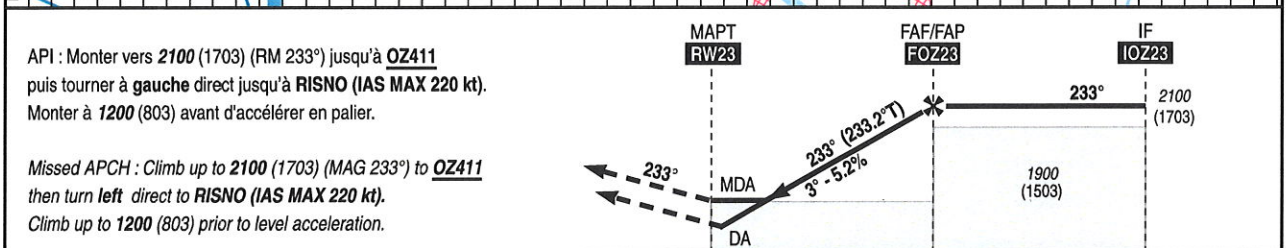
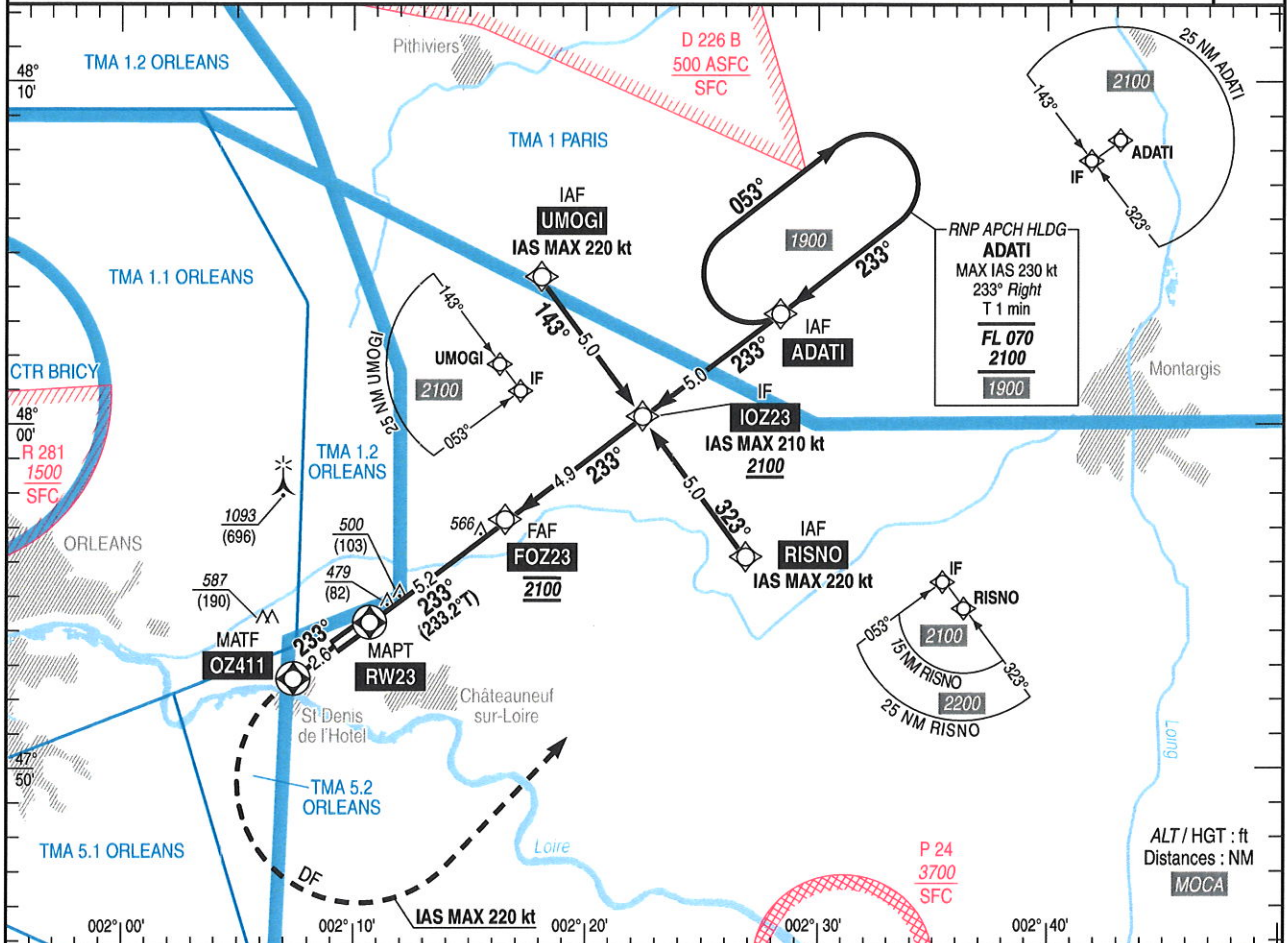
Instrument approach

CAT A B C

ALT AD : 397, THR : 397 (15 hPa)

RNAV (GNSS) RWY 23

APP : NIL TWR : NIL AFIS : SAINT DENIS Information 122.400 Absence ATS : A/A FR seulement. Obtenir le QNH local sur STAP ou le QNH d'ORLY auprès d'ATIS ORLY 126.500 (FR) 131.350 (EN). A/A FR only. Obtain local QNH from STAP or ORLY QNH from ATIS ORLY 126.500 (FR) 131.350 (EN). Contacter BRICY Approche 122.700 si TMA ORLEANS active / Contact BRICY Approach 122.700 if TMA ORLEANS active.	EGNOS Ch 75258 E23A RDH : 50	VAR 0° (15)
---	--	-------------------



API : Monter vers 2100 (1703) (RM 233°) jusqu'à **OZ411** puis tourner à gauche direct jusqu'à **RISNO (IAS MAX 220 kt)**. Monter à 1200 (803) avant d'accélérer en palier.

Missed APCH : Climb up to 2100 (1703) (MAG 233°) to **OZ411** then turn left direct to **RISNO (IAS MAX 220 kt)**. Climb up to 1200 (803) prior to level acceleration.

THR ← (NM) REF HGT : ALT THR

CAT	LPV			LNAV			MVL / Circling ⁽¹⁾		MVL / Circling ⁽¹⁾ sans QNH local Without local QNH		DIST RW23
	DA (H)	RVR	OCH	MDA (H)	RVR	OCH	MDA (H)	VIS	MDA (H)	VIS	
A			211		1500		890 (490)	1500	1110 (720)	1500	5
B	650 (250)	1300	224	750 (350)	1500	349	900 (500)	1600	1110 (720)	1600	4
C			232		1600		1490 (1090)	2400	1720 (1320)	2400	3
											2
											1

Observations / Remarks : Absence ATS : - procédure obligatoirement suivie de MVL / Procedure must be followed by circling.
 - entraînement IFR interdit / IFR training prohibited.
 Si panne ou perte de guidage du système GNSS / If GNSS system guidance loss or failure : voir/see AIP ENR 1.5.
 (1) MVL interdite au Sud de la piste / Circling prohibited South of RWY.

FAF - MAPT	5.2 NM	70 kt 4 min 27	85 kt 3 min 40	100 kt 3 min 07	115 kt 2 min 43	130 kt 2 min 24	145 kt 2 min 09	160 kt 1 min 57
VSP (ft/min)		370	450	530	610	690	770	850

Input data

Operation Type	0
SBAS Provider	1
Airport Identifier	LFOZ
Runway	23
Runway Direction	0
Approach Performance Designator	0
Route Indicator	
Reference Path Data Selector	0
Reference Path Identifier	E23A
LTP/FTP Latitude	475410.0065N
LTP/FTP Longitude	0021028.0135E
LTP/FTP Ellipsoidal Height (metres)	166.1
FPAP Latitude	475337.0820N
Delta FPAP Latitude (seconds)	-32.9245
FPAP Longitude	0020922.7220E
Delta FPAP Longitude (seconds)	-65.2915
Threshold Crossing Height	15.0
TCH Units Selector	1
Glidepath Angle (degrees)	3.00
Course Width (metres)	105.00
Length Offset (metres)	96
HAL (metres)	40.0
VAL (metres)	35.0

Output data

Data Block	10 1A 0F 06 0C 17 00 00 01 33 32 05 AD C1 8E 14 5B E4 EE 00 7D 1A C7 FE FE E9 01 FE 2C 81 2C 01 64 0C C8 AF 2A EE 41 C6
Calculated CRC Value	2AEE41C6

Required Additional Data

ICAO Code	LF
LTP/FTP Orthometric Height (metres)	121.1
FPAP Orthometric Height (metres)	121.1

RNAV(GNSS) RWY 23												
RMK	xxx						MAG VAR 2015 00.0°E		Ref NAVAID :			
Leg sequence	Path Terminator	Waypoint Identification	Fly Over	Direction MAG (°)	Direction True (°)	Distance (NM)	Turn direction	MINM Altitude (FL or AMSL ft)	MAX Altitude (FL or AMSL ft)	MAX IAS (kt)	Vertical angle (°) / TCH (m)	Nav Spec
INA RISNO	IF	RISNO								220.00		RNP APCH
	TF	IOZ23	N	323	323,4	5,0		2100.00		210.00		RNP APCH
INA UMOGI	IF	UMOGI								220.00		RNP APCH
	TF	IOZ23	N	143	143,2	5,0		2100.00		210.00		RNP APCH
INA ADATI	IF	ADATI										RNP APCH
	TF	IOZ23	N	233	233,4	5,0		2100.00		210.00		RNP APCH
APCH	IF	IOZ23						2100.00		210.00		RNP APCH
	TF	FOZ23	N	233	233,3	4,9		2100.00	2100.00			RNP APCH
	TF	RW23	Y	233	233,2	5,2					-3.0/15	RNP APCH
	TF	OZ411	Y	233	233,1	2,6						RNP APCH
	DF	RISNO	N				L	2100.00		220.00		RNP APCH
HLDG	HM	ADATI		233	233,0		R	2100	FL70	230		RNP APCH

APPROCHE AUX INSTRUMENTS

ORLEANS SAINT DENIS DE L'HOTEL

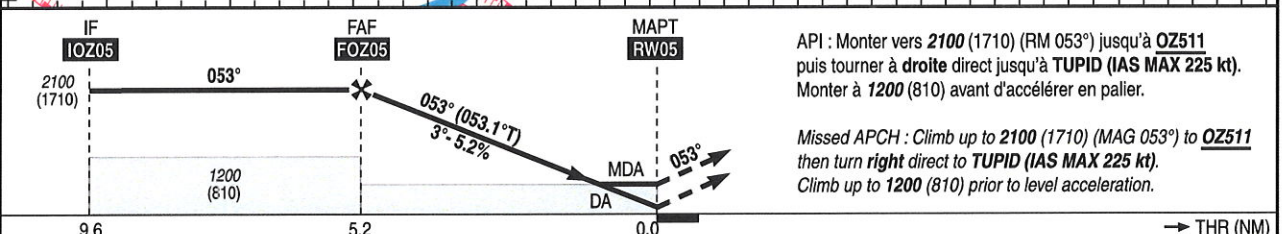
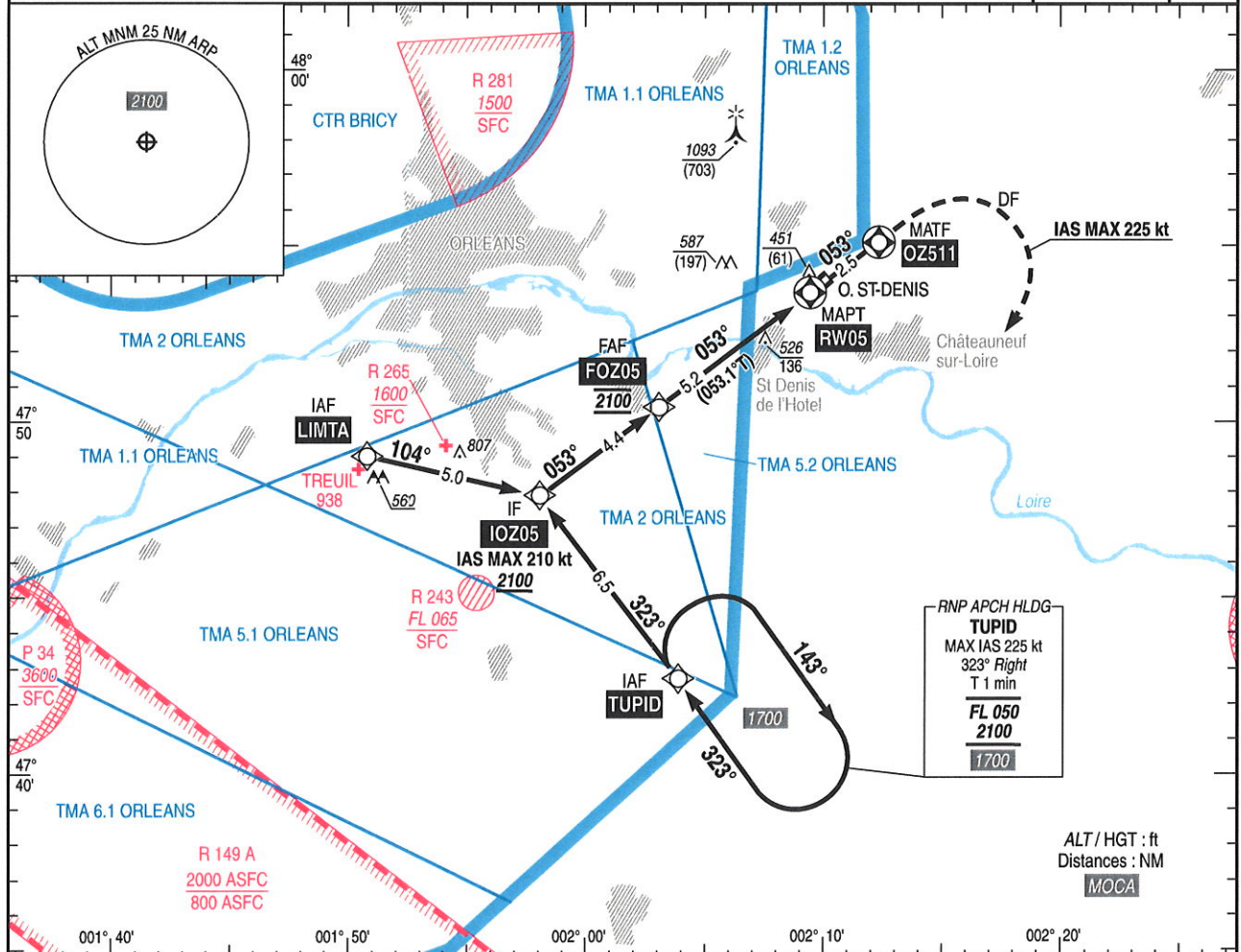
Instrument approach

CAT A B C

ALT AD : 396, THR : 390 (15 hPa)

RNAV (GNSS) RWY 05

APP : NIL TWR : NIL AFIS : SAINT DENIS Information 122.400 Absence ATS : A/A FR seulement. Obtenir le QNH local sur STAP ou le QNH d'ORLY auprès d'ATIS ORLY 126.500 (FR) 131.350 (EN). A/A FR only. Obtain local QNH from STAP or ORLY QNH from ATIS ORLY 126.500 (FR) 131.350 (EN). Contacter BRICY Approche 122.700 si TMA ORLEANS active / Contact BRICY Approach 122.700 if TMA ORLEANS active.	EGNOS Ch 74931 E05A RDH : 50	VAR 0° (15)
---	---	-------------------



API : Monter vers 2100 (1710) (RM 053°) jusqu'à OZ511 puis tourner à droite direct jusqu'à TUPID (IAS MAX 225 kt). Monter à 1200 (810) avant d'accélérer en palier.
 Missed APCH : Climb up to 2100 (1710) (MAG 053°) to OZ511 then turn right direct to TUPID (IAS MAX 225 kt). Climb up to 1200 (810) prior to level acceleration.

MNM AD : distances verticales en pieds, RVR et VIS en mètres / vertical distances in feet, RVR and VIS in meters. REF HGT : ALT THR

CAT	LPV			LNAV			MVL / Circling (1)		MVL / Circling (1) sans QNH local Without local QNH		DIST RW05				
	DA (H)	RVR	OCH	MDA (H)	RVR	OCH	MDA (H)	VIS	MDA (H)	VIS	NM	5	4	3	2
A			190		1500		890 (500)	1500	1110 (720)	1500		2030 (1630)	1710 (1320)	1400 (1000)	1080 (680)
B	640 (250)	1300	203	780 (390)	1500	382	890 (500)	1600	1110 (720)	1600					
C			211		1800		1490 (1100)	2400	1720 (1330)	2400					

Observations / Remarks : Absence ATS : - procédure obligatoirement suivie de MVL / Procedure must be followed by circling.
 - entraînement IFR interdit / IFR training prohibited.
 Si panne ou perte de guidage du système GNSS / If GNSS system guidance loss or failure : voir/see AIP ENR 1.5.
 (1) MVL interdite au Sud de la piste / Circling prohibited South of RWY.

FAF - MAPT	5.2 NM	70 kt 4 min 28	85 kt 3 min 41	100 kt 3 min 08	115 kt 2 min 43	130 kt 2 min 24	145 kt 2 min 09	160 kt 1 min 57
VSP (ft/min)		370	450	530	610	690	770	850

Input data

Operation Type	0
SBAS Provider	1
Airport Identifier	LFOZ
Runway	05
Runway Direction	0
Approach Performance Designator	0
Route Indicator	
Reference Path Data Selector	0
Reference Path Identifier	E05A
LTP/FTP Latitude	475338.9110N
LTP/FTP Longitude	0020926.3480E
LTP/FTP Ellipsoidal Height (metres)	164.0
FPAP Latitude	475411.8350N
Delta FPAP Latitude (seconds)	32.9240
FPAP Longitude	0021031.6400E
Delta FPAP Longitude (seconds)	65.2920
Threshold Crossing Height	15.0
TCH Units Selector	1
Glidepath Angle (degrees)	3.00
Course Width (metres)	105.00
Length Offset (metres)	96
HAL (metres)	40.0
VAL (metres)	35.0

Output data

Data Block	10 1A 0F 06 0C 05 00 00 01 35 30 05 BE CE 8D 14 98 02 ED 00 68 1A 38 01 01 18 FE 01 2C 81 2C 01 64 0C C8 AF 33 CF BF 38
Calculated CRC Value	33CFBF38

Required Additional Data

ICAO Code	LF
LTP/FTP Orthometric Height (metres)	118.9
FPAP Orthometric Height (metres)	118.9

RNAV (GNSS) RWY 05													
RMK	Leg sequence	Path Terminator	Waypoint Identification	Fly Over	Direction MAG (°)	Direction True (°)	Distance (NM)	Turn direction	MAG VAR 2015 0.0°E		Ref NAVAID :		
									MMN Altitude (FL or AMSL ft)	MAX Altitude (FL or AMSL ft)	MAX IAS (kt)	Vertical angle (°) / TCH (m)	Nav Spec
	INA TUPID	IF	TUPID										
		TF	IOZ05		323	323.3	6.5			2100.00 FT	210		RNP APCH
	INA LIMTA	IF	LIMTA										RNP APCH
		TF	IOZ05		104	103.8	5			2100.00 FT	210		RNP APCH
		IF	IOZ05							2100.00 FT	210		RNP APCH
	APCH	TF	FOZ05		053	053.0	4.4			2100.00 FT			RNP APCH
		TF	RW05	YES	053	053.1	5.2					-3.0 / 15	RNP APCH
		TF	OZ511	YES	053	053.1	2.5						RNP APCH
	HLDG	DF	TUPID					R		2100.00 FT			RNP APCH
		HM	TUPID	Yes	323	323.0	T 1 min	R		2100	FL50	225	

DATA

ORLEANS ST DENIS DE L'HOTEL

POINTS / REPERES ESSENTIELS DES PROCEDURES

Waypoints / Procedures main fixes

Identification	Coordonnées <i>Coordinates</i>		RNAV	CONV
→ IAF LIMTA	REF ENR 4.3		X	
→ IAF TUPID	REF ENR 4.3		X	
→ IF IOZ05	47°47'53.5"N	001°58'03.9"E	X	
→ FAF FOZ05	47°50'31.1"N	002°03'14.7"E	X	
→ THR RW05	47°53'38.91"N	002°09'26.35"E	X	
→ MATF OZ511	47°55'07.0"N	002°12'21.2"E	X	
→ IAF ADATI	REF Enr 4.3		X	
→ IAF RISNO	REF Enr 4.3		X	
→ IAF UMOGI	REF Enr 4.3		X	
→ FAF FOZ23	47°57'16.6"N	002°16'38.9"E	X	
→ IF IOZ23	48°00'12.3"N	002°22'29.3"E	X	
→ MATF OZ411	47°52'37.8"N	002°07'25.3"E	X	
→ THR RW23	47°54'10.01"N	002°10'28.01"E	X	