

APPROCHE AUX INSTRUMENTS

ORLEANS SAINT DENIS DE L'HOTEL

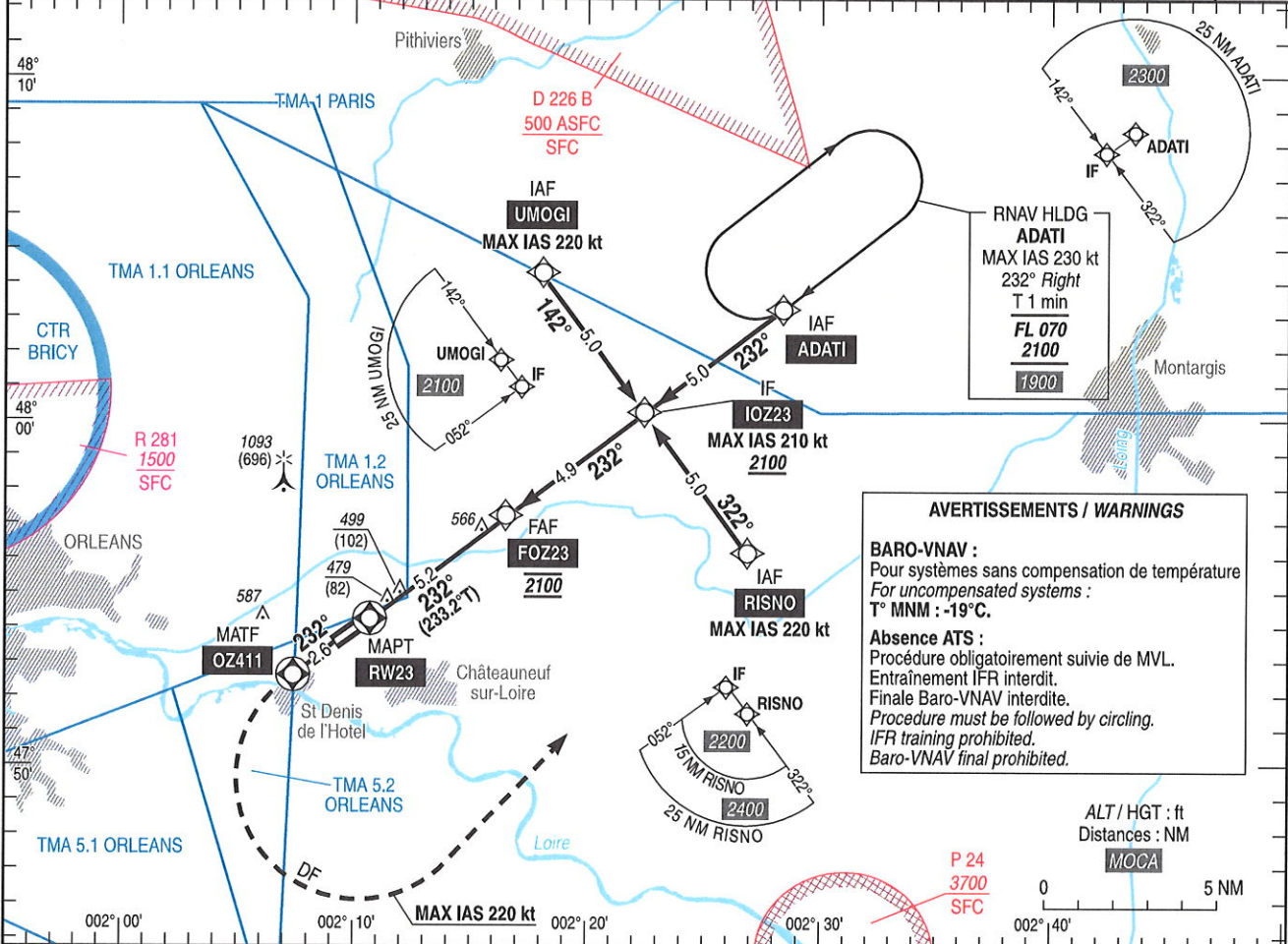
Instrument approach

CAT A B C

ALT AD : 397, THR : 397 (15 hPa)

RNP RWY 23

APP : NIL TWR : NIL AFIS : SAINT DENIS Information 122.405 Absence ATS : A/A FR seulement. Obtenir le QNH local sur STAP ou le QNH d'ORLY auprès d'ATIS ORLY 126.505 (FR) 131.355 (EN). A/A FR only. Obtain local QNH from STAP or ORLY QNH from ATIS ORLY 126.505 (FR) 131.355 (EN). Contacter BRICY Approche 122.700 si TMA ORLEANS active / Contact BRICY Approach 122.700 if TMA ORLEANS active.	RNP APCH	EGNOS Ch 75258 E23A TCH : 49	VAR 1° E (2020)
---	-----------------	--	------------------------------



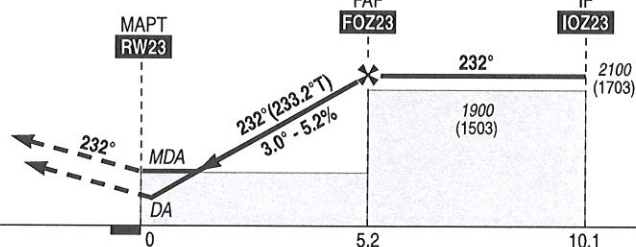
AVERTISSEMENTS / WARNINGS

BARO-VNAV :
Pour systèmes sans compensation de température
For uncompensated systems :
T° MNN : -19°C.

Absence ATS :
Procédure obligatoirement suivie de MVL.
Entraînement IFR interdit.
Finale Baro-VNAV interdite.
Procedure must be followed by circling.
IFR training prohibited.
Baro-VNAV final prohibited.

API : Monter vers **2100** (1703) (RM 232°) jusqu'à **OZ411**
puis tourner à **gauche** direct jusqu'à **RISNO** (MAX IAS 220 kt).
Monter à **1200** (803) avant d'accélérer en palier.

Missed APCH : Climb to **2100** (1703) (MAG 232°) to **OZ411**
then turn **left** direct to **RISNO** (MAX IAS 220 kt).
Climb to **1200** (803) prior to level acceleration.



THR ← (NM) 0 5.2 10.1

MNM AD : distances verticales en pieds, RVR et VIS en mètres / vertical distances in feet, RVR and VIS in metres. REF HGT : ALT THR

CAT	LPV			LNAV-VNAV			LNAV			MVL / Circling (1)		MVL / Circling (1) sans QNH local Without local QNH		DIST RW23
	DA (H)	RVR	OCH	DA (H)	RVR	OCH	MDA (H)	RVR	OCH	MDA (H)	VIS	MDA (H)	VIS	
A	610 (220)		211	650 (250)	550	232				890 (490)	1500	1110 (720)	1500	NM 5 4 3 2 1 ALT 2040 1720 1400 1080 770 (HGT) (1643) (1323) (1003) (683) (373)
B	630 (230)	550	224	650 (250)	550	244	770 (370)	1000	365	900 (500)	1600	1110 (720)	1600	
C	630 (240)		232	650 (260)	600	252				1490 (1090)	2400	1720 (1320)	2400	

Observations / Remarks : (1) MVL interdite au Sud de la piste / Circling prohibited South of RWY.
Panne de guidage GNSS lors de l'approche / Loss of GNSS guidance during approach : voir/see AIP ENR 1.5.

STAP : Voir/See AD 2 LFOZ.23

FOZ23 - RW23 5.2 NM	70 kt	85 kt	100 kt	115 kt	130 kt	145 kt	160 kt
	4 min 27	3 min 40	3 min 07	2 min 43	2 min 24	2 min 09	1 min 57
VSP (ft/min)	370	450	530	610	690	770	850

Input data

Operation Type	0
SBAS Provider	1 (EGNOS)
Airport Identifier	LFOZ
Runway	23
Runway Letter	0 (None)
Approach Performance Designator	0
Route Indicator	
Reference Path Data Selector	0
Reference Path Identifier	E23A
LTP/FTP Latitude	475410.0065N
LTP/FTP Longitude	0021028.0135E
LTP/FTP Ellipsoidal Height (metres)	166.1
FPAP Latitude	475337.0820N
Delta FPAP Latitude (seconds)	-32.9245
FPAP Longitude	0020922.7220E
Delta FPAP Longitude (seconds)	-65.2915
Threshold Crossing Height	15.0
TCH Units Selector	1 (meters)
Glidepath Angle (degrees)	3.00
Course Width (metres)	105.00
Length Offset (metres)	96
HAL (metres)	40.0
VAL (metres)	35.0

Output data

Data Block	10 1A 0F 06 0C 17 00 00 01 33 32 05 AD C1 8E 14 5B E4 EE 00 7D 1A C7 FE FE E9 01 FE 2C 81 2C 01 64 0C C8 AF 2A EE 41 C6
Calculated CRC Value	2AEE41C6

Required Additional Data

ICAO Code	LF
LTP/FTP Orthometric Height (metres)	121.1

RNP RWY 23												
RMK	xxx	MAG VAR 2020					01.0°E		Ref NAVAID :			
Leg sequence	Path Terminator	Waypoint Identification	Fly Over	Direction MAG (°)	Direction True (°)	Distance (NIM)	Turn direction	MMN Altitude (FL or AMSL ft)	MAX Altitude (FL or AMSL ft)	MAX IAS (kt)	Vertical angle (°) / TCH (m)	Navigation Accuracy (NIM)
INA RISNO	IF	RISNO								220.00		-
	TF	IOZ23	N	322.0	323.4	5.0		2100.00		210.00		1.0
INA UMOGI	IF	UMOGI								220.00		-
	TF	IOZ23	N	142.0	143.2	5.0		2100.00		210.00		1.0
INA ADATI	IF	ADATI										-
	TF	IOZ23	N	232.0	233.4	5.0		2100.00		210.00		1.0
APCH	IF	IOZ23						2100.00		210.00		-
	TF	FOZ23	N	232.0	233.3	4.9		2100.00	2100.00			1.0
	TF	RW23	Y	232.0	233.2	5.2					-3.0/15	0.3
	TF	OZ411	Y	232.0	233.1	2.6						1.0
	DF	RISNO	N				L	2100.00		220.00		1.0

APPROCHE AUX INSTRUMENTS

Instrument approach

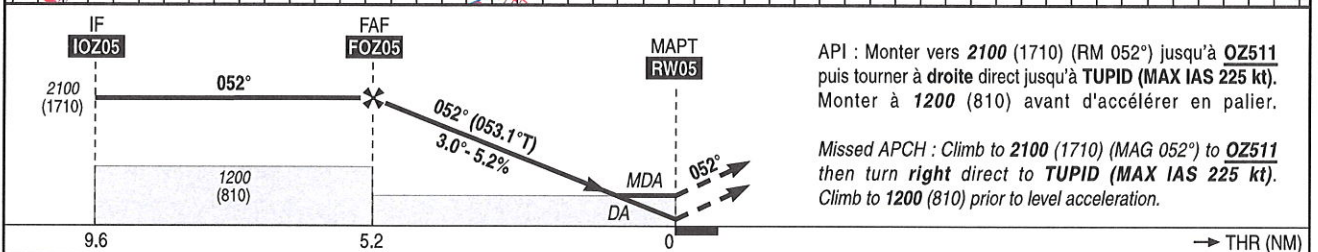
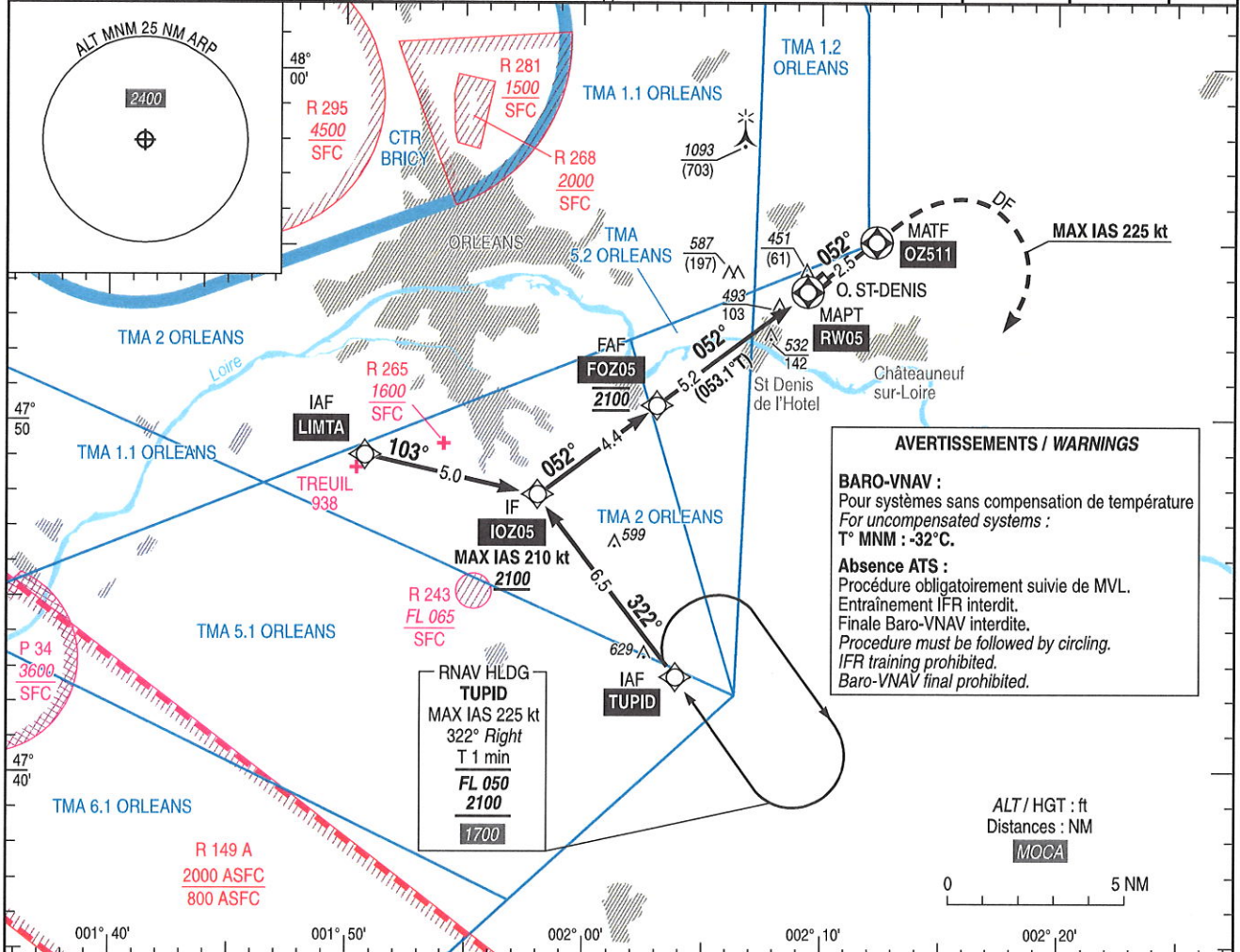
CAT A B C

ALT AD : 397, THR : 390 (14 hPa)

ORLEANS SAINT DENIS DE L'HOTEL

RNP RWY 05

APP : NIL TWR : NIL AFIS : SAINT DENIS Information 122.405 Absence ATS : A/A FR seulement. Obtenir le QNH local sur STAP ou le QNH d'ORLY auprès d'ATIS ORLY 126.505 (FR) 131.355 (EN). A/A FR only. Obtain local QNH from STAP or ORLY QNH from ATIS ORLY 126.505 (FR) 131.355 (EN). Contacter BRICY Approche 122.700 si TMA ORLEANS active / Contact BRICY Approach 122.700 if TMA ORLEANS active.	RNP APCH	EGNOS Ch 74931 E05A TCH : 49	VAR 1° E (2020)
---	-----------------	--	------------------------------



API : Monter vers 2100 (1710) (RM 052°) jusqu'à OZ511 puis tourner à droite direct jusqu'à TUPID (MAX IAS 225 kt). Monter à 1200 (810) avant d'accélérer en palier.

Missed APCH : Climb to 2100 (1710) (MAG 052°) to OZ511 then turn right direct to TUPID (MAX IAS 225 kt). Climb to 1200 (810) prior to level acceleration.

MNM AD : distances verticales en pieds, RVR et VIS en mètres / vertical distances in feet, RVR and VIS in metres. REF HGT : ALT THR

CAT	LPV			LNAV-VNAV			LNAV			MVL / Circling (1)		MVL / Circling (1) sans QNH local Without local QNH		DIST RWY05				
	DA (H)	RVR	OCH	DA (H)	RVR	OCH	MDA (H)	RVR	OCH	MDA (H)	VIS	MDA (H)	VIS	NM	5	4	3	2
A	590 (200)		190	640 (250)		232		1500		890 (500)	1500	1110 (720)	1500		2030 (1640)	1710 (1320)	1400 (1010)	1080 (690)
B	600 (210)	1200	203	640 (250)	1300	245	780 (390)	1500	388	890 (500)	1600	1110 (720)	1600					
C	610 (220)		211	650 (260)		253		1800		1490 (1100)	2400	1720 (1330)	2400					

Observations / Remarks : (1) MVL interdite au Sud de la piste / Circling prohibited South of RWY.
Panne de guidage GNSS lors de l'approche / Loss of GNSS guidance during approach : voir/see AIP ENR 1.5.

STAP : Voir/see AD 2 LFOZ.23																		
FOZ05 - RW05 5.2 NM	70 kt	85 kt	100 kt	115 kt	130 kt	145 kt	160 kt											
VSP (ft/min)	370	450	530	610	690	770	850											

DATA

ORLEANS SAINT DENIS DE L'HOTEL

POINTS / REPERES ESSENTIELS DES PROCEDURES
Waypoints / Procedures main fixes

Identification	Coordonnées <i>Coordinates</i>	RNAV	CONV	SID STAR	IAC
→ ORS	REF AD 2 LFOZ.19		X		X
ADATI	REF ENR 4.4	X			X
LIMTA	REF ENR 4.4	X			X
RISNO	REF ENR 4.4	X			X
TUPID	REF ENR 4.4	X			X
UMOGI	REF ENR 4.4	X			X
IOZ05	47°47'53.5" N 001°58'03.9" E	X			X
FOZ05	47°50'31.1" N 002°03'14.7" E	X			X
RW05	47°53'38.91" N 002°09'26.35" E	X			X
OZ511	47°55'07.0" N 002°12'21.2" E	X			X
IOZ23	48°00'12.3" N 002°22'29.3" E	X			X
FOZ23	47°57'16.6" N 002°16'38.9" E	X			X
OZ411	47°52'37.8" N 002°07'25.3" E	X			X
RW23	47°54'10.01" N 002°10'28.01" E	X			X

Input data

Operation Type	0
SBAS Provider	1 (EGNOS)
Airport Identifier	LFOZ
Runway	05
Runway Letter	0 (None)
Approach Performance Designator	0
Route Indicator	
Reference Path Data Selector	0
Reference Path Identifier	E05A
LTP/FTP Latitude	475338.9110N
LTP/FTP Longitude	0020926.3480E
LTP/FTP Ellipsoidal Height (metres)	164.0
FPAP Latitude	475411.8350N
Delta FPAP Latitude (seconds)	32.9240
FPAP Longitude	0021031.6400E
Delta FPAP Longitude (seconds)	65.2920
Threshold Crossing Height	15.0
TCH Units Selector	1 (meters)
Glidepath Angle (degrees)	3.00
Course Width (metres)	105.00
Length Offset (metres)	96
HAL (metres)	40.0
VAL (metres)	35.0

Output data

Data Block	10 1A 0F 06 0C 05 00 00 01 35 30 05 BE CE 8D 14 98 02 ED 00 68 1A 38 01 01 18 FE 01 2C 81 2C 01 64 0C C8 AF 33 CF BF 38
Calculated CRC Value	33CFBF38

Required Additional Data

ICAO Code	LF
LTP/FTP Orthometric Height (metres)	118.9

RNP RWY 05														
RMK	xxx	MAG VAR 2020 01.0°E							RefNAVAID :					
		Leg sequence	Path Terminator	Waypoint Identification	Fly Over	Direction MAG (°)	Direction True (°)	Distance (NM)	Turn direction	MINM Altitude (FL or AMSL ft)	MAX Altitude (FL or AMSL ft)	MAX IAS (kt)	Vertical angle (°) / TCH (m)	Navigation Accuracy (NM)
INA	TUPID	IF	TUPID											-
		TF	IOZ05	N	322.0	323.3	6.5		2100.00		210.00			1.0
INA	UMOGI	IF	LIMTA											-
		TF	IOZ05	N	103.0	103.8	5.0		2100.00		210.00			1.0
		IF	IOZ05						2100.00		210.00			-
		TF	FOZ05	N	052.0	053.0	4.4		2100.00	2100.00				1.0
		TF	RW05	Y	052.0	053.1	5.2						-3.0/15	0.3
		TF	OZ511	Y	052.0	053.1	2.5							1.0
		DF	TUPID	N				R	2100.00		225			1.0